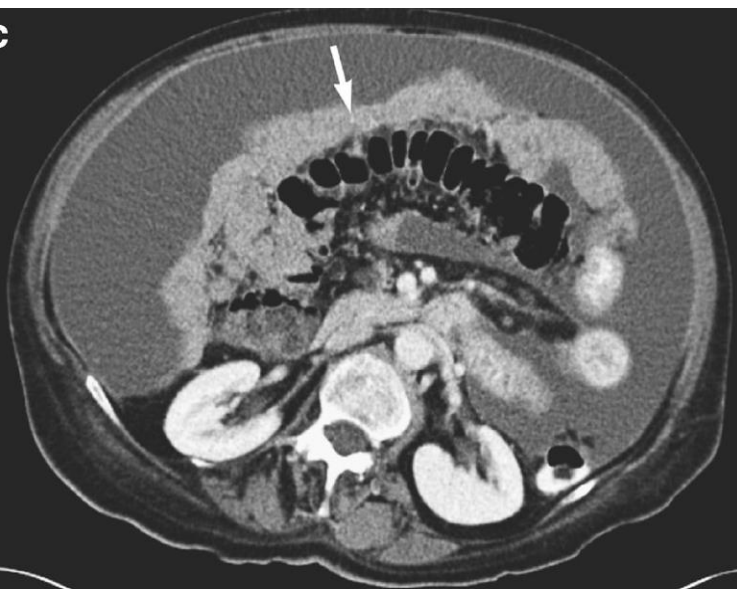


Ovarian Cancer 2017-9

Gordon Jayson
Christie Hospital and
University of Manchester
June 2019

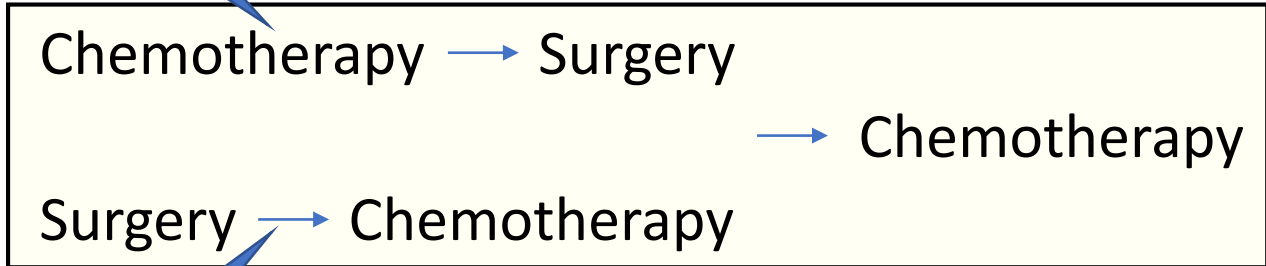
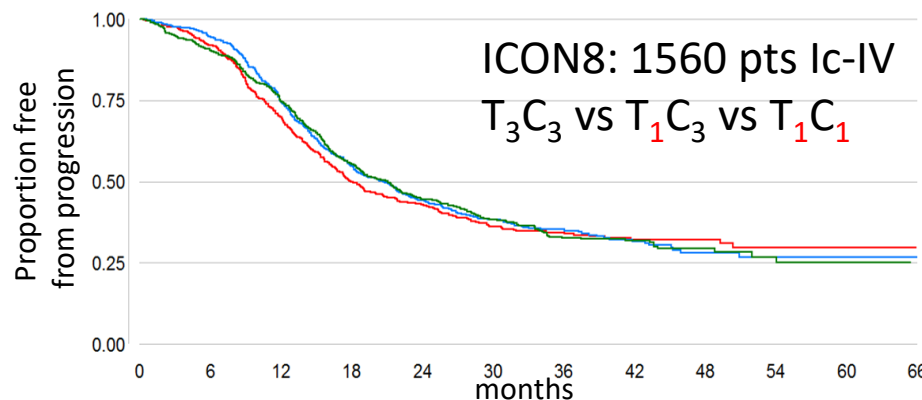
Ovarian Cancer New Patient: Surgery and Cytotoxic Chemotherapy



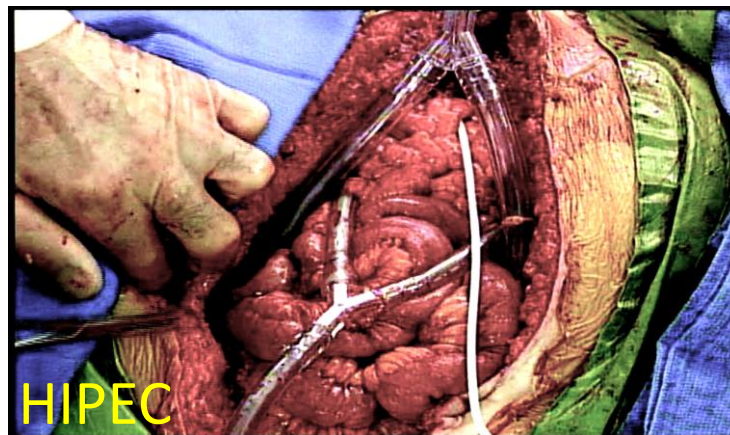
Stage IV



Stage III



Surgery or chemo?
What surgery
Which Chemo?



Maintenance Therapy in 1st Line Management of Ovarian Cancer

Bevacizumab

Boost Trial
15 vs 30m

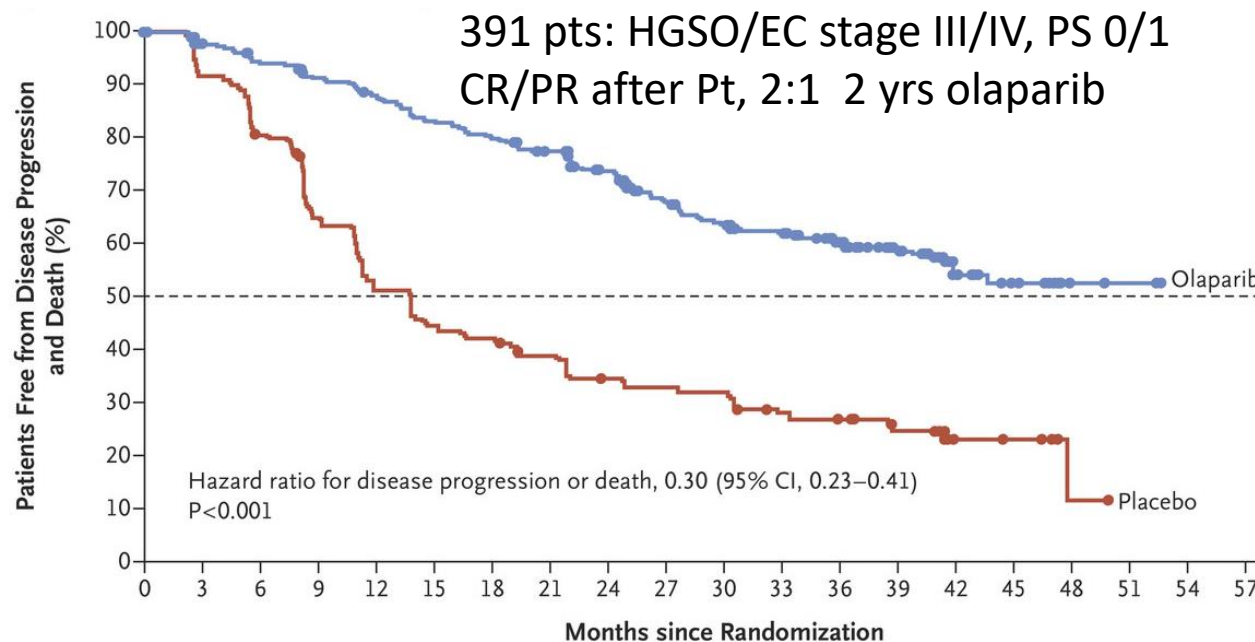
Surgery
Chemotherapy

PAOLA
Bev +/-
olaparib

Olaparib in gBRCAm

GOG3005
Velaparib
co-admin

PRIMA
Niraparib
BRCAwt/m



More (maintenance) is better... or is it?

TIL
therapy

-
-

□

IMaGYN050: Bev +/- Atezo

VEGFi

PD-(L)1: Avelumab (Javelin)

PARPi

DUO-O

Durvelumab
Bevacizumab
Olaparib

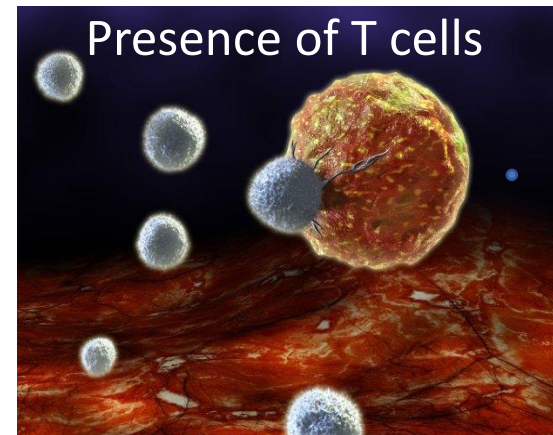
□

ATHENA: Rucaparib, nivolumab

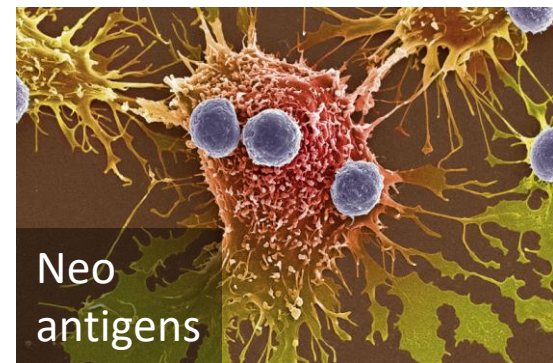
JAVELIN 100 PARP: Avelumab, talazaporib

□

Presence of T cells



Neo
antigens



PD-1/PD-L1

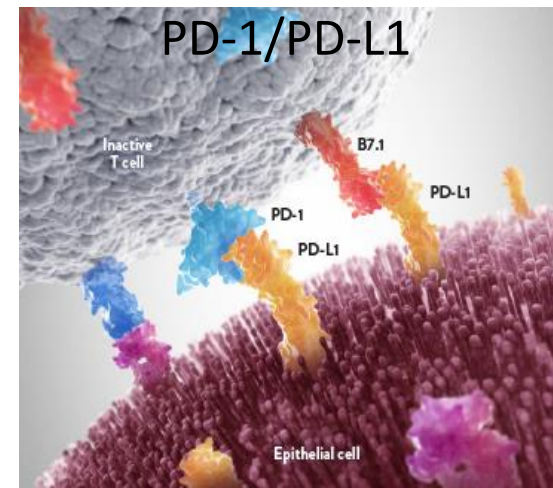
Inactive
T cell

B7.1

PD-1

PD-L1

Epithelial cell



Surgery for Recurrent Ovarian Cancer



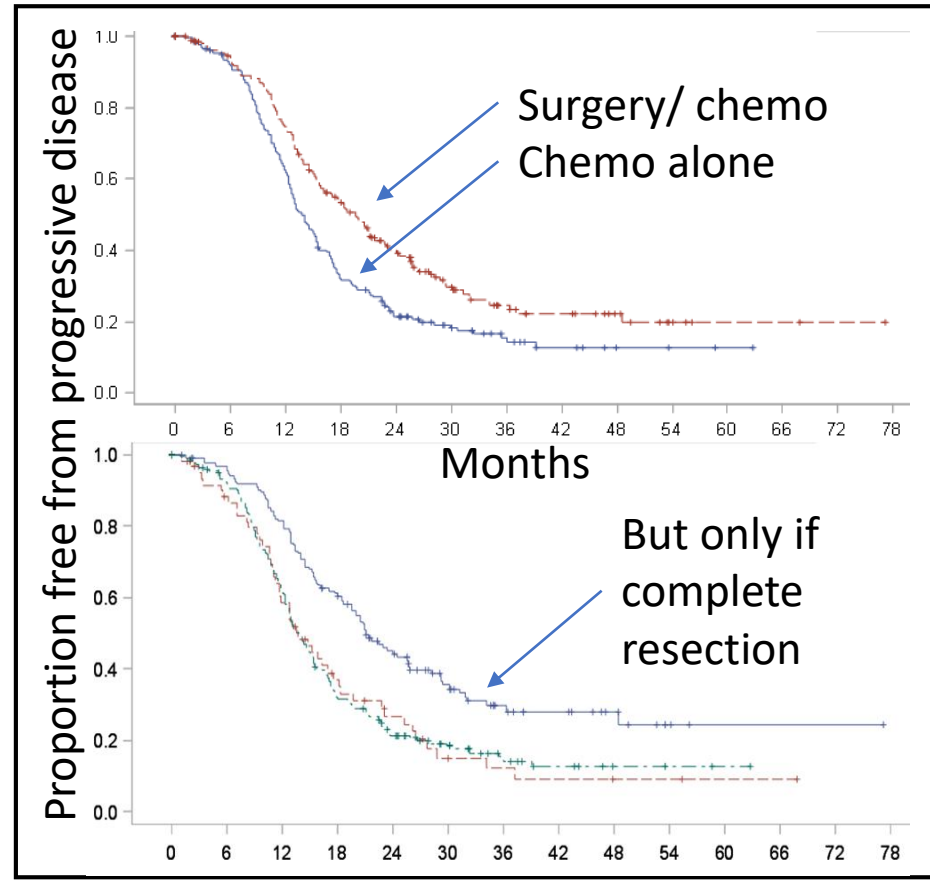
1st Recurrence
PSROC AGO+ve
N= 408

Max cytoreductive effort
Chemotherapy

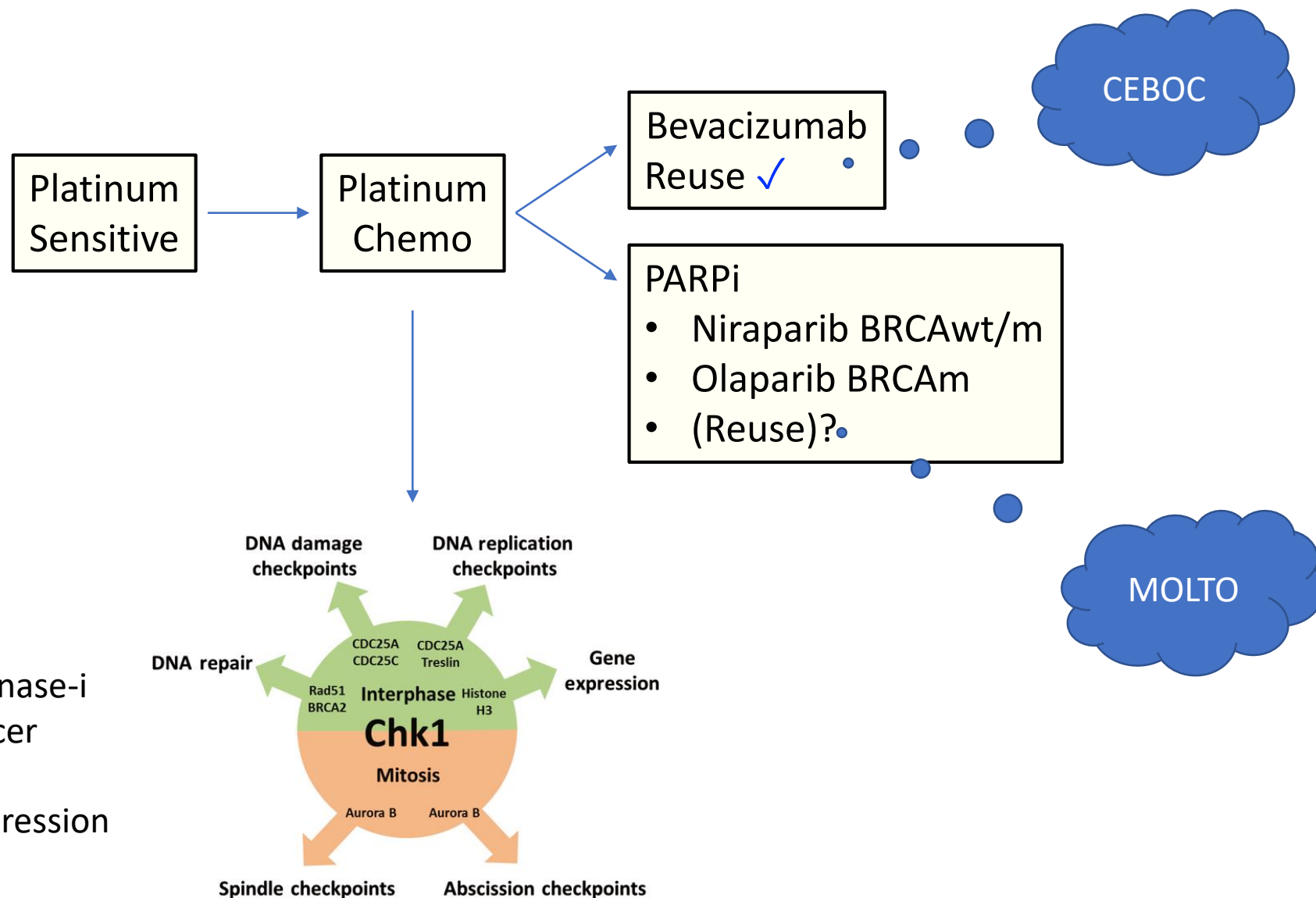
Chemotherapy

DESKTOP 3

AGO score
Complete Resection
ECOG 0
Ascites <500mls



Systemic Anti-Cancer Therapy for Recurrent Ovarian Cancer



Prexasertib

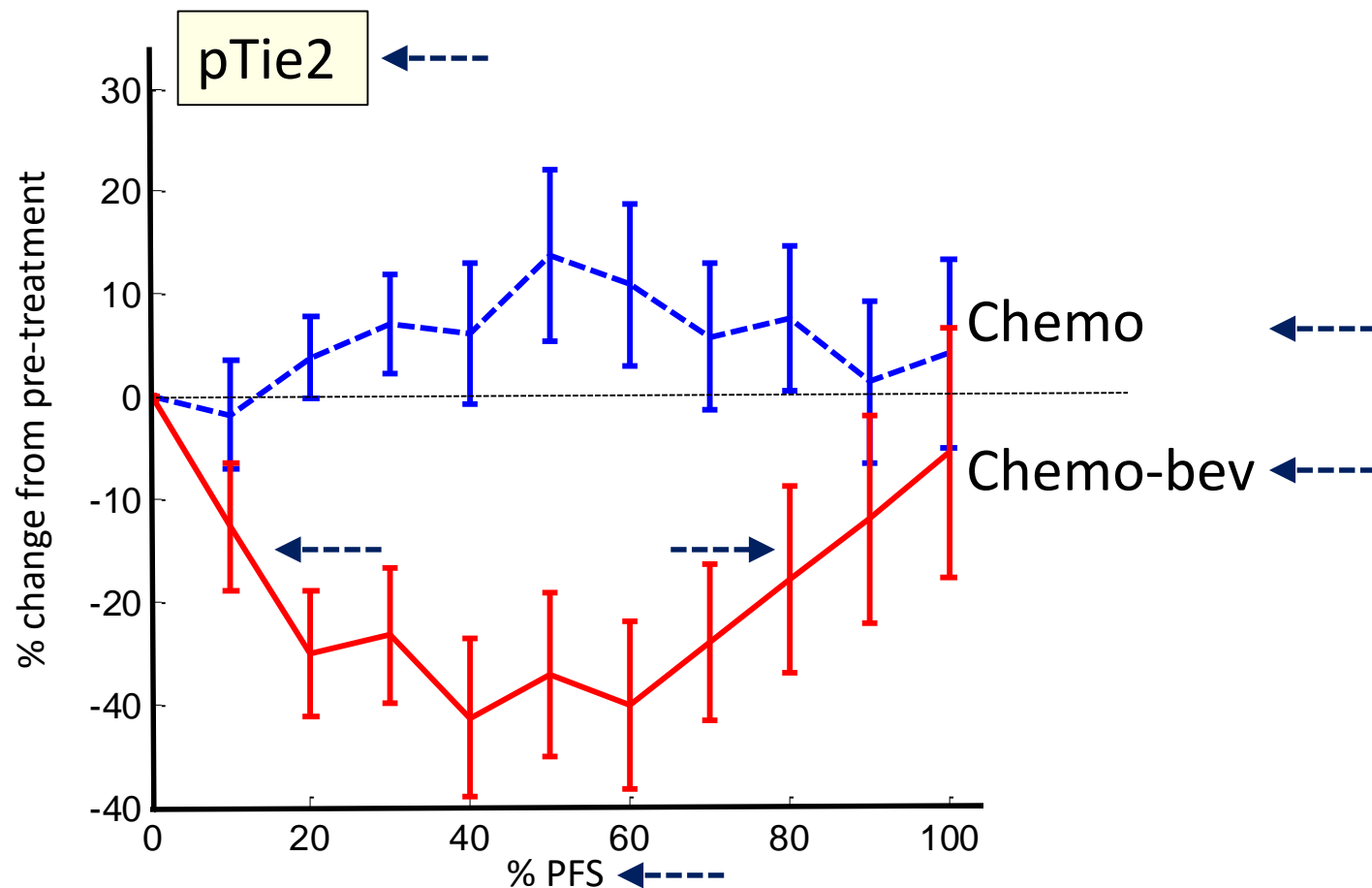
Checkpoint 1 kinase-i

Pt^r-ovarian cancer

30% RR

Tox: Myelosuppression

How do we choose between maintenance therapies?



Ov Ca
CRC

Tie2 response biomarker for VEGFi

- 75% vascular RR in ov ca/ CRC
- Vascular response is >30% reduction in Tie2 in 9 wks
- Vascular resistance/progression is >50% increase in Tie2 above nadir

Aim

To qualify Tie2 for clinical decision making for bevacizumab in ovarian cancer.

How do we Choose Between Maintenance Therapies?

Platinum-sensitive
ovarian cancer

Platinum chemotherapy

Bevacizumab

Tie2

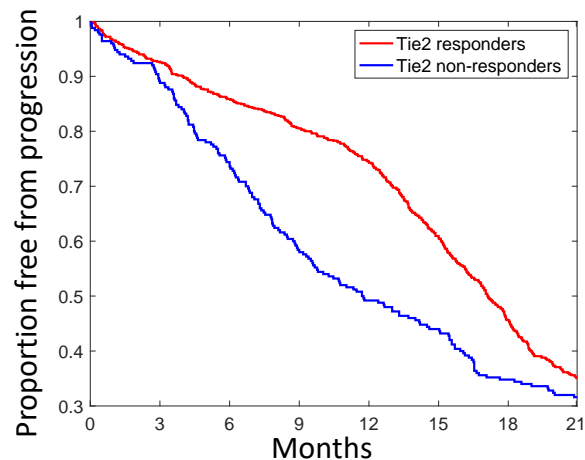
gBRCAm — No previous PARPi — PARPi

PR/CR

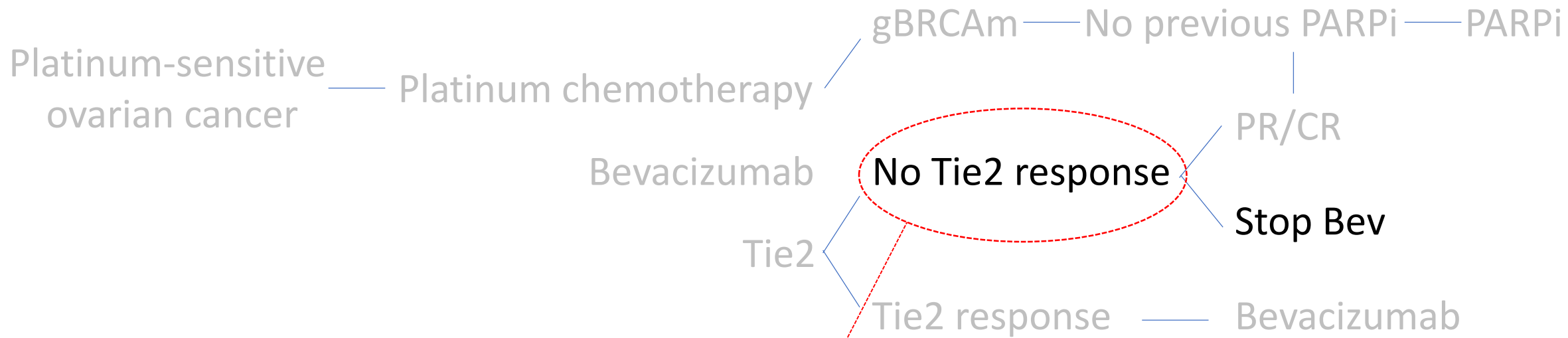
Stop Bev

Tie2 response — Bevacizumab

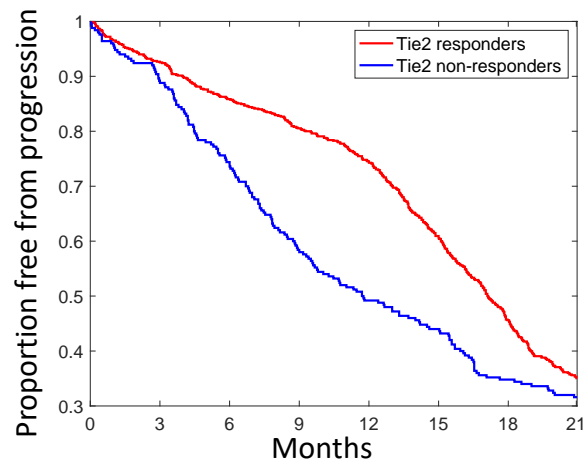
Step 1: Real Life Testing



How do we Choose Between Maintenance Therapies?



Step 1: Real Life Testing



Step 2: Randomised discontinuation

Summary

Ovarian cancer is becoming a chronic disease

- PARPi
- VEGFi

Manchester is contributing

- ICON8
- Tie2: VEGFi
- CEBOC
- MOLTO
- T-cell programme